



# Certificate of Analysis

Prepared for:



Product Description: Hemp CBD Tincture 1000mg/30mL OHFC, OCO2, OVAN, OTRPS, OSTV

Invoice Number: 2021-

Lot Number: T-14621-B1

Manufacture Date: May 26, 2021

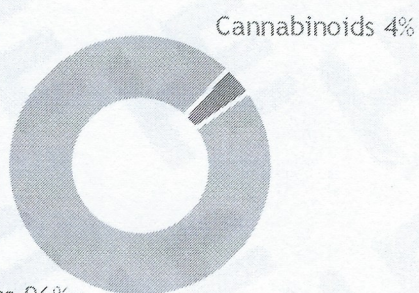
Product Code: T-1000-OCO2-OHFC-OVAN-OTRPS-OSTV-30

Date of Analysis: May 27, 2021

Best By Date: Nov 26, 2022

## Cannabinoid Potency - Expected CBD: 33.33 mg/mL $\pm$ 10%

### % Total Cannabinoids



\*Total d9-THC and CBD are calculated taking into account the loss of a carboxyl group during decarboxylation.

The formulas are as follows:  $d9\text{-THC} = d9\text{THC} + (\text{THCa} \times (0.877))$   $\text{CBD} = \text{CBD} + (\text{CBDa} \times (0.877))$

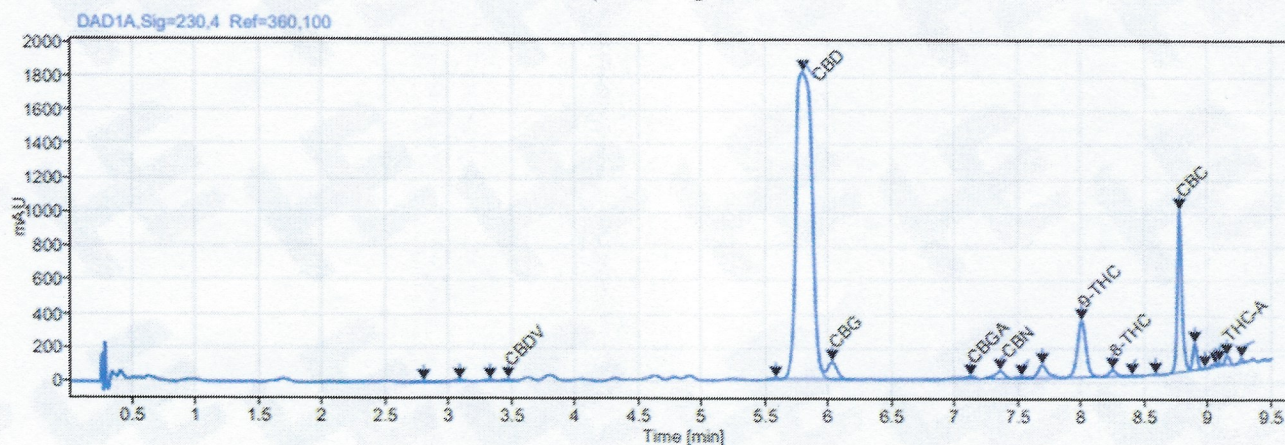
\*\*Any compounds with results listed as "<LOD" were below the Limit of Detection and were not detected.

\*\*\*LOQ is the limit of quantitation for any given analyte.

	mg/mL	%	LOQ (mg/mL)
Total CBD:	34.19 mg/mL	3.42 %	0.05 mg/mL
CBD:	34.19 mg/mL	3.42 %	0.05 mg/mL
CBDa:	<LOD	<LOD	0.05 mg/mL
d9-THC:	1.61 mg/mL	0.16 %	0.05 mg/mL
CBC:	1.17 mg/mL	0.12 %	0.05 mg/mL
CBG:	0.52 mg/mL	0.05 %	0.05 mg/mL
CBGa:	<LOQ	<LOQ	0.05 mg/mL
CBN:	0.09 mg/mL	0.01 %	0.05 mg/mL
CBDV:	0.05 mg/mL	0.01 %	0.05 mg/mL
d8-THC:	0.18 mg/mL	0.02 %	0.05 mg/mL
THCa:	0.07 mg/mL	0.01 %	0.05 mg/mL

Density: 0.944 (kg/m<sup>3</sup>) Specific Gravity: 0.947

### Chromatogram



Prepared By: S. Scarabosio  
Analytical Lab Manager  
May 28, 2021

Reviewed By: B. Estes  
QA/QC Analyst  
May 28, 2021




Analyzed via HPLC Under These Conditions: Humidity: 31% Temperature: 75.8 °F

ISO 9001:2015 Certificate Number: US4293

Certificate of Analysis test results are based only on the analysis of the product listed in the "Product Description" of this form. The Continuum, LLC makes no claims as to the efficacy, safety, or other risks associated with any detected or non-detected compounds reported herein. All analyses conducted at The Continuum, LLC is performed on well-maintained, quality instruments utilizing Good Laboratory Practices and validated methodology. This Certificate may not be reproduced except in full, without the written approval of The Continuum, LLC.



	<b>Product Specification Sheet:</b> OHFC Tincture, Vanilla Flavored w/ Terpenes & Stevia, Bottled Full-Spectrum	<b>Document #:</b> PSS-T-OCO2-OHFC-OVAN-OTRPS-OSTV-30 <b>Version:</b> 1.0 <b>Issue Date:</b> 02/20/2020 <b>Supersedes:</b> NEW
	<b>Product Code:</b> T-1000-OCO2-OHFC-OVAN-OTRPS-OSTV-30	<b>Completed By:</b> SES <b>Invoice #:</b> 2021-269A

#### SECTION 1: PRODUCT DETAILS

<b>PRODUCT NAME</b>	Hemp-derived Cannabidiol (CBD) Tincture OHFC Base, Full-Spectrum		
<b>PRODUCT DESCRIPTION</b>	CBD Tincture in OHFC, Full-Spectrum		
<b>INTENDED USE</b>	For oral consumption.		
<b>COUNTRY OF ORIGIN</b>	USA	<b>LOT #</b>	T-14621-B1
<b>MANUFACTURE DATE</b>	May 26, 2021	<b>CBD POTENCY</b>	34.19 mg/mL
<b>BEST BY DATE</b>	Nov 26, 2022	<b>NET WEIGHT</b>	1 fl. oz (30 mL) per bottle

#### SECTION 2: INGREDIENT AND NUTRITION INFORMATION

INGREDIENTS LIST

Ingredients: Organic Coconut Medium Chain Triglyceride (MCT) Oil (Organic Fractionated Coconut Oil), Organic Hemp Seed Oil, Organic Hemp Cannabidiol (CBD) Oil, Organic Vanilla Flavoring (organic sunflower seed oil, natural flavors), Organic Terpenes, Organic Stevia. *(Contains <0.3% THC).*

**CONTAINS: COCONUTS.**

*Store in original container in a cool, dark place. Keep out of direct light and humidity.*

**Directions for Use:**  
*Take 1-2 servings as needed.*

**Precautionary Allergen Statement:**  
*Manufactured in a facility that handles almonds, anchovy, coconut, salmon, soy, and walnuts.*

*The FDA has not evaluated this product for safety or efficacy. This product is intended for oral use. This product is not intended to diagnose, treat, cure or prevent any disease.*

NUTRITION FACTS PANEL

Nutrition Facts

30 servings per container

Serving size

0.2 tsp (1ml)

Amount per serving

Calories

10

% Daily Value\*

Total Fat 1g

1%

Saturated Fat 1g

5%

Trans Fat 0g

Cholesterol 0mg

0%

Sodium 0mg

0%

Total Carbohydrate 0g

0%

Dietary Fiber 0g

0%

Total Sugars 0g

Includes 0g Added Sugars

0%

Protein 0g

Vitamin D 0mcg

0%

Calcium 0mg

0%

Iron 0mg

0%

Potassium 0mg

0%

\*The % Daily Value tells you how much a nutrient in a serving of food contributes to a daily diet. 2,000 calories a day is used for general nutrition advice.